

The Japan Society for Precision Engineering (JSPE), established in 1933 with 300 members, is an institute authorized by the Ministry of Education, Culture, Sports, Science and Technology. Presently, JSPE has more than 7,000 regular members, 300 corporate members and 100 honorary members from various organizations including universities, research laboratories and industrial organizations.

□ JSPE was begun with the purpose of discussing common problems and future developments by a group of mechanical engineers and researchers who were particularly concerned with "Extremely Advanced Technology."

□ Since then, JSPE has developed to encompass all engineering fields that require highly advanced technology and now plays a leading role in the research and development of production systems, instrumentation, system control, and CAD/CAM, as well as precision mechanical elements.

□ JSPE is also contributing to the education of engineers in its role as a center for various research and development organizations which are directed toward new technology, including micromachines, bioengineering, and product lifecycle engineering.



Semestrial meeting



Microrobot contest

JSPE members can benefit from the wealth of information on precision engineering in JSPE's journals, as well as the many opportunities to participate in various activities, such as meetings, conferences, tutorial lectures and plant tours, and to promote cooperative work in research and development.

Areas Covered by JSPE

Design & Production Systems

Lifecycle engineering,
Product & process modeling,
Design theory,
CAD/CAM/CAE ,
Rapid prototyping,
Automated & intelligent systems,
Production management,
MES, CIM, etc.

Mechatronics

Micromachines,
Intelligent robots,
Information instruments,
Precision positioning,
Machine tools & tooling,
Intelligent control,
Mechanism & mechanical elements, etc.

Precision Machining

Cutting, Abrasive machining,
Planalization (CMP etc),
Micromachining,
EDM, Energy beam machining,
Injection molding,
Deposition (PVD, CVD),
Nanomachining, etc.

Precision Engineering

Metrology

- Image processing, Optronics,
- 3D shape measurement,
- Surface & roughness measurement,
- Intelligent data analysis,
- SPM,
- In-process measurement,
- Nanomeasurement, etc.

Humans & Environment

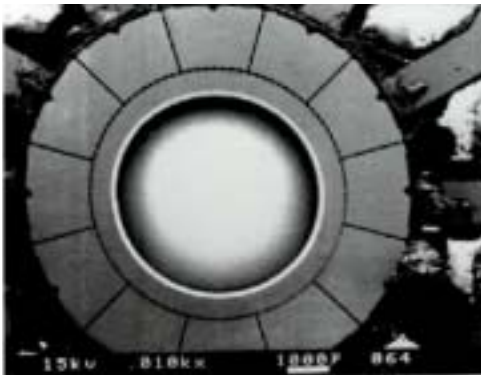
Human engineering,
Welfare engineering,
Biomedical precision engineering,
Biomedical measurement,
Environmental machine & eco-machining
Amusement machine,
Techno-history, Human skill, etc.



Rapid prototyping and manufacturing



Ultraprecision machining tool



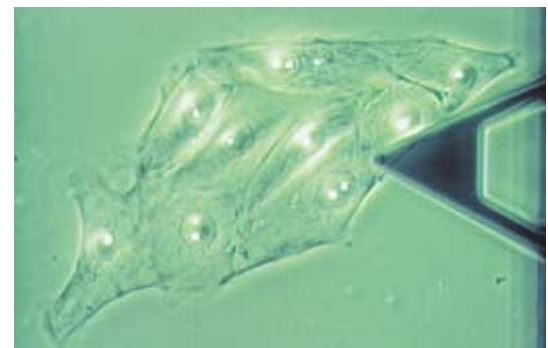
Electrostatic micromotor



Small backlash planetary gear reducer



Microsampling and measurement system



Cell manipulation with micro cantilever

Major Activities of JSPE

Organization of meetings and conferences

- Semestrial meeting (spring and autumn)
- International conferences (ICPE)
- Other joint symposia and conferences
- Exhibitions
- Plant tours

Educational programs

- Tutorial lectures
- Presentation of graduate studies
- Microrobot contest

Publications

- Japanese Journal of JSPE (monthly)
- Precision Engineering (quarterly, in English)
- JSPE publication series
- Handbook of Precision Machining
- Precision machinery design handbook
- Other technical books

Promotion of cooperative work in research and development

- Technical committees
- Industrial/academic cooperative research committee

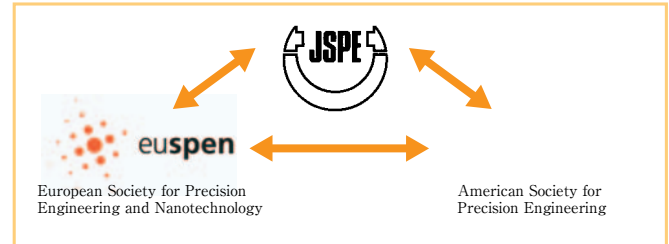
Awards, Prizes

- JSPE Prize
- JSPE Award
- JSPE Paper Prize
- Numata Memorial Paper Prize
- JSPE Technology Development Award
- Hasunuma Memorial Award
- JSPE Takagi Award

Communication and cooperation with foreign and international societies

- ASPE, **euspen**, CIRP, ISO, etc.

International Activities



International Journal

Precision Engineering - Journal of the International Societies for Precision Engineering and Nanotechnology takes an integrated approach to all subjects related to research, design, manufacture, performance validation, and application of high-precision machines, instruments, and components, including fundamental and applied research and development in manufacturing processes, fabrication technology, and advanced measurement science.

The journal is associated with two other international societies: the American Society for Precision Engineering (ASPE) and the European Society for Precision Engineering and Nanotechnology (**euspen**).

International Conference

The International Conference on Precision Engineering (ICPE) is held every two years, sponsored by JSPE, ASPE and **euspen** to promote research activities in various areas of precision and production engineering. Engineers from different companies and countries around the world come together to discuss the advanced technologies in related fields. At each conference, more than one hundred presentations are organized, and technical and products exhibits are held at the conference site.

Benefits of Membership

As a member of JSPE you

- receive up-to-date information on precision engineering from the Japanese Journal of JSPE and the quarterly international journal, Precision Engineering.
- receive the latest information on precision engineering at semestrial (spring and autumn) and local meetings.
- have the opportunity to present papers at meetings and to submit papers to JSPE's journals.
- receive discounts on JSPE publications.
- receive discounts on JSPE tutorial, meeting, and conference fees.
- have the opportunity to participate in JSPE's technical committees in which members from various fields collaborate on specific research and development projects.
- have many opportunities to participate in other activities such as tutorial lectures and plant tours where you can gather and exchange information with specialists.
- receive the privilege to use the JSPE members-only website that includes tutorials, materials of past events, technical forums, experts database and other valuable contents.

Types of Membership

REGULAR MEMBERSHIP is open to all scientists, technicians and engineers working in any aspect of precision engineering.

STUDENT MEMBERSHIP is open to any student living in Japan and pursuing academic studies related to the field of precision engineering. Student members pay reduced membership rates, and may attend the meetings at no cost.

CORPORATE MEMBERSHIP is open to any company or organization. WEB CLASS is established as a rank of corporate membership for small- and medium-sized companies with lower membership rates.

HONORARY MEMBERSHIP is a distinguished membership honored by the society for contributions to precision engineering.

How to Join

Fill out the application form and send it to the following address by mail or fax. If you have any questions about your membership or other items, please call, fax or e-mail us.

The Japan Society for Precision Engineering
Kudan-Seiwa Building, 1-5-9 Kudan-Kita,
Chiyoda-ku, Tokyo 102-0073, Japan

Phone: (+81) 3-5226-5191

Fax: (+81) 3-5226-5192

E-mail: jspe_jspe@jspe.or.jp

<http://www.jspe.or.jp/english/>